

# ATHOS

# SIGN UP FOR THE MILEAGE TEST



dealer .....

adress .....

Contact Person .....

phone .....

driver .....

mobile .....

forwarding agent .....

adress .....

Contact Person .....

phone .....

License plate trailer .....

## General information

Data on the mileage of ATHOS tires is required. It is not important that only ATHOS tires are mounted on a vehicle. Tires of other brands may also be mounted on the other axles. You can register at least 6, but not more than 12, tires in the test as part of this promotion. The tires must be **NEW** to start the test.

## Registration and Term

You log in by sending us the completed form back. You will then receive a personal data form adapted to your needs. The start date determines the rhythm of data collection. This must be done once a month, ideally always on the same day (for example, 08 June, 08 July, etc.). The measurement can be delayed for a week. An earlier measurement is in return but not allowed. The test ends after one year. If you have already started to collect ATHOS tires, we may accept your results retrospectively up to three months as long as they meet our requirements.

## Binding registration

I hereby bind myself to the already mentioned conditions for the mileage test. I agree that my data will be used for advertising purposes.

place, date .....

signature .....

## Technical requirements

Data collection may only be carried out when cold, otherwise the results will be falsified. Each tread groove should be measured at one point on the tire with a tread depth gauge and the average value calculated. The determined average values per tire are to be made available to us monthly. The tread depth can **not** be measured by the TWI mark.

## Credit

For the monthly data collection you receive from us one credit per tire of: **20, - € for tires 17.5 inches, 30, - € for tires 19.5 / 22.5 inches.** Prerequisite for the receipt of the credit note is the signed agreement, the montage proof by photo, as well as the measurement of the data over a period of 12 months and the monthly transmission of this data to Hämmerling The Tire Company.

## Data transmission

You will receive a template for the monthly data collection from us. The completed form, as well as 1 photo of a tire (trailer rear right), have to be send monthly to the following address: [laufleistung@haemmerling.de](mailto:laufleistung@haemmerling.de) or via whatsapp to the following mobile number: **+49 (0) 1722552801**

**hämmerling**  
THE TYRE COMPANY

# ATI-HDS

## DATA COLLECTION TRAILER

driver name .....

Tested tyre .....

License plate truck .....

measurement date .....

mileage (Km) .....

application  long-distance traffic  local traffic  construction site

average total weight (t) .....

Tyre-ID .....

DOT .....

air pressure (bar) .....

Tread depth (mm)

1. .... 2. .... 3. .... 4. ....

Tyre-ID .....

DOT .....

air pressure (bar) .....

Tread depth (mm)

1. .... 2. .... 3. .... 4. ....

Tyre-ID .....

DOT .....

air pressure (bar) .....

Tread depth (mm)

1. .... 2. .... 3. .... 4. ....

Tyre-ID .....

DOT .....

air pressure (bar) .....

Tread depth (mm)

1. .... 2. .... 3. .... 4. ....

Tyre-ID .....

DOT .....

air pressure (bar) .....

Tread depth (mm)

1. .... 2. .... 3. .... 4. ....

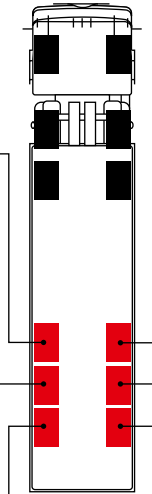
Tyre-ID .....

DOT .....

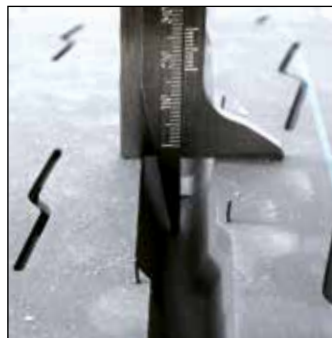
air pressure (bar) .....

Tread depth (mm)

1. .... 2. .... 3. .... 4. ....



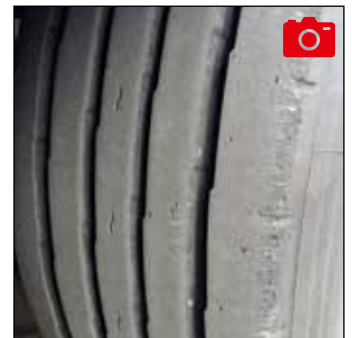
1. tread grooves



2. right



3. wrong



4. rear right

**EN** The data acquisition may only be done in cold condition (12 hours after the end of the journey), otherwise the results will be falsified. Each tread groove should be measured and entered at one point on the tire with a tread gauge (see picture 1.). The tread depth should **not** be measured at the TWI mark (see picture 3.).

The determined values per tire and a photo of the rear right tire (see picture 4.) are sent monthly to the following address: [laufleistung@haemmerling.de](mailto:laufleistung@haemmerling.de)

Or via WhatsApp to the following mobile number: 01722552801

# ATI-HDS

## DATA COLLECTION TRUCK

driver name .....

Tested tyre .....

License plate truck .....

measurement date .....

mileage (Km) .....

application  long-distance traffic  local traffic  construction site

average total weight (t) .....

Tyre-ID .....

DOT .....

air pressure (bar) .....

Tread depth (mm)

1. .... 2. .... 3. .... 4. ....

Tyre-ID .....

DOT .....

air pressure (bar) .....

Tread depth (mm)

1. .... 2. .... 3. .... 4. ....

Tyre-ID .....

DOT .....

air pressure (bar) .....

Tread depth (mm)

1. .... 2. .... 3. .... 4. ....

Tyre-ID .....

DOT .....

air pressure (bar) .....

Tread depth (mm)

1. .... 2. .... 3. .... 4. ....

Tyre-ID .....

DOT .....

air pressure (bar) .....

Tread depth (mm)

1. .... 2. .... 3. .... 4. ....

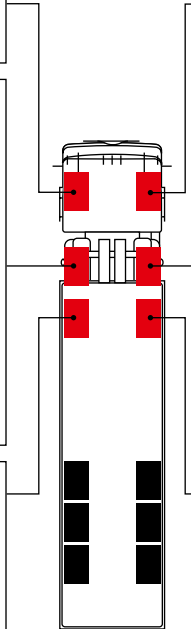
Tyre-ID .....

DOT .....

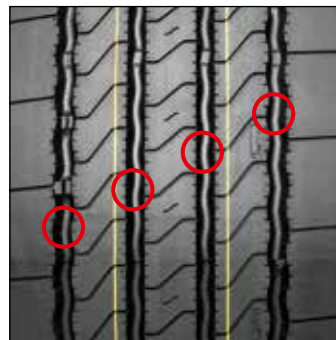
air pressure (bar) .....

Tread depth (mm)

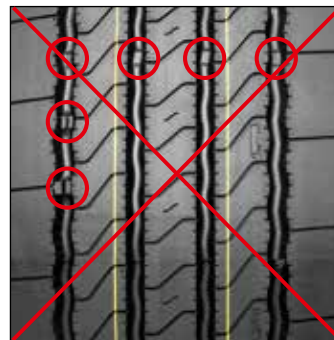
1. .... 2. .... 3. .... 4. ....



1. tread grooves



2. right



3. wrong



4. photo

**EN** The data acquisition may only be done in cold condition (12 hours after the end of the journey), otherwise the results will be falsified. Each tread groove should be measured and entered at one point on the tire with a tread gauge (see picture 1.). The tread depth should **not** be measured at the TWI mark (see picture 3.).

The determined values per tire and a photo of one tire (see picture 4.) are sent monthly to the following address: [laufleistung@hammerling.de](mailto:laufleistung@hammerling.de)

Or via WhatsApp to the following mobile number: 01722552801